

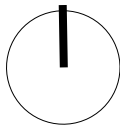
# APEX PARK TC22/50 INCLUSIVE PLAYSPACE

TOWN OF GAWLER

DATE: 13.01.2023



LOCATION //  
APEX PARK, GAWLER SA 5118





SITE CONDITION //

CLIMATE ANALYSIS

GEODATA

HEIGHT: 58M  
LAT: S 34°36'7.2"  
LNG: E 138°44'53.14"  
  
SET LAT/LON  
-34.60200°  
138.74810°

SOLAR DATA

SUMMER SOLSTICE  
22 DEC

DAWN: 05:28:56  
SUNRISE: 05:58:08  
CULMINATION: 13:12:52  
SUNSET: 20:27:36  
DUSK: 20:56:49  
DAYLIGHT DURATION: 14H29M28S  
DISTANCE [KM]: 147.174.629  
ALTITUDE: 40.46°

WINTER SOLSTICE  
22 JUN

DAWN: 06:53:53  
SUNRISE: 07:21:34  
CULMINATION: 12:16:57  
SUNSET: 17:12:19  
DUSK: 17:40:01  
DAYLIGHT DURATION: 9H50M45S  
DISTANCE [KM]: 152.032.726  
ALTITUDE: 19.65°

AUTUMNAL EQUINOX  
22 MAR

DAWN: 06:54:13  
SUNRISE: 07:19:03  
CULMINATION: 13:22:00  
SUNSET: 19:24:22  
DUSK: 19:49:11  
DAYLIGHT DURATION: 12H5M19S  
DISTANCE [KM]: 149.038.594  
ALTITUDE: 25.36°

VERNAL EQUINOX  
22 SEP

DAWN: 05:40:04  
SUNRISE: 06:04:53  
CULMINATION: 12:07:52  
SUNSET: 18:11:23  
DUSK: 18:36:14  
DAYLIGHT DURATION: 12H6M30S  
DISTANCE [KM]: 150.177.468  
ALTITUDE: 39.00°

REFER TO DIAGRAM

SWOT ANALYSIS

STRENGTHS

- Natural surroundings including, well established trees, views of the river
- The community public event space.
- Manageable walkable distance to surrounding commercial assess and transport options.

WEAKNESSES

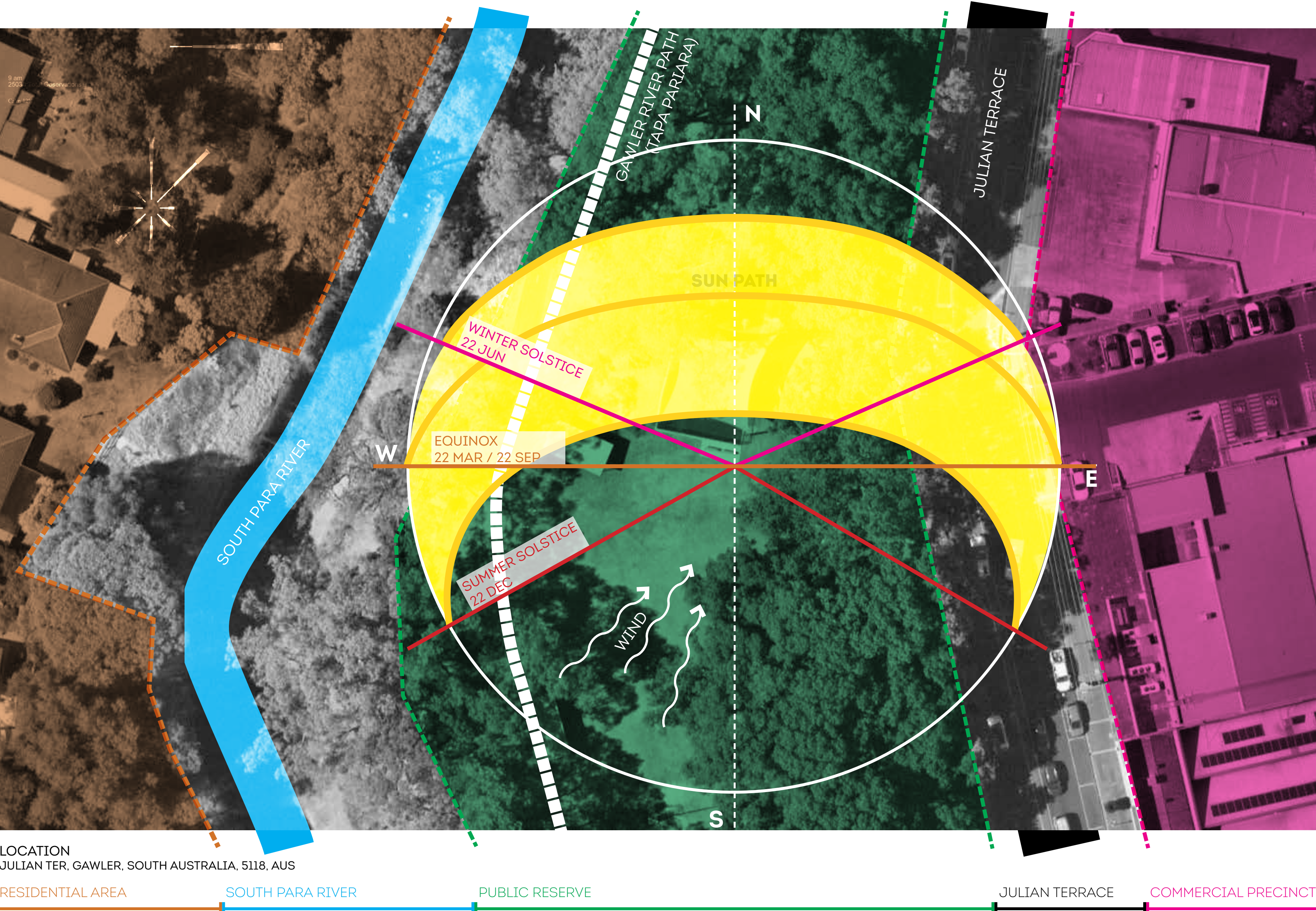
- The adjacent licenced building(s) utilise the green space for untoward activities, creating a sometimes dangerous environment prone to crime
- The established trees provide hiding spots for nomadic users.
- The slope on the west is sleeps with a lack of obstruction which presents safety concerns.
- Maintain access for council vehicles

OPPORTUNITIES

- The area is already provides a great natural setting and facilities with can be utilised
- The site area has a gradual rise suitable for DDA requirements.
- Their large amount of pedestrian movement on and around the site
- Access to commercial establishments and strong travel corridors.

THREATS

- Natural surroundings including, well established trees and the TPZ, and the natural slope along the waterway
- Antisocial behaviour and dumping
- The crime in the area
- Access to commercial establishments



LOCATION  
JULIAN TER, GAWLER, SOUTH AUSTRALIA, 5118, AUS

LANDSCAPE SITE ANALYSIS PLAN  
NTS

SITE ANALYSIS

SITE NOTES

Apex Park is situated on Julian Terrace, parallel to Murray Street, Gawler's main street. The park is on the bank of the South Para River and has plenty of shady Moreton Bay Fig trees, planted in the 1870s. The flowing South Para rive provides a haven of flora and fauna, with strong birdlife and nesting frogs.

VIEWS

The site offers strong vista throughout, including views to the waterway, parallel to the walking trail and open views across the turfed reserve.

ESTABLISHED TREES

The site is edged by and avenue of mature Moreton Bay Fig trees (Ficus macrophylla), creating an area with solar, wind and noise protection.

AMENITIES

The site offers a range of facilities, including a number of public furniture options, cooking facilities, ample on street parking, access to public sanitary facilities, as well as the recently upgraded shaded playground. A short walk away, located near the bridge, is outdoor gym equipment for the fitness-minded patrons.

CULTURE AND HERITAGE

Informative panels are in and around the area that provide wonderful insights into the history of the area, including native birds and vegetation as well as current site uses including exercise stops and the use of the established trees as a unique Wedding venue.

SOCIAL INTERACTION

Walkable connection to the commercial precinct and the main street (Murray Street). The existing 'Gawler River Path' walking trail (approximately 10km long) provides a linear link into multiple shared paths through the town of Gawler. The Gawler Rivers Path (Tapa Pariara) provides a great means of exercise, commuting, or simply enjoying the riverside bushlands of the town. The site hosts a number of significant community events, including the presentation of Australia Day Awards, on occasion outdoor screenings of several movies as well as the Rotary Club annual Christmas display

CONDITION AND DURABILITY

The existing playground is well maintained, however does require surveillance to manage to presence of undesirable anti-social behaviour. This is not continually present but does require supervision to remain safe, strong, and inviting to users.

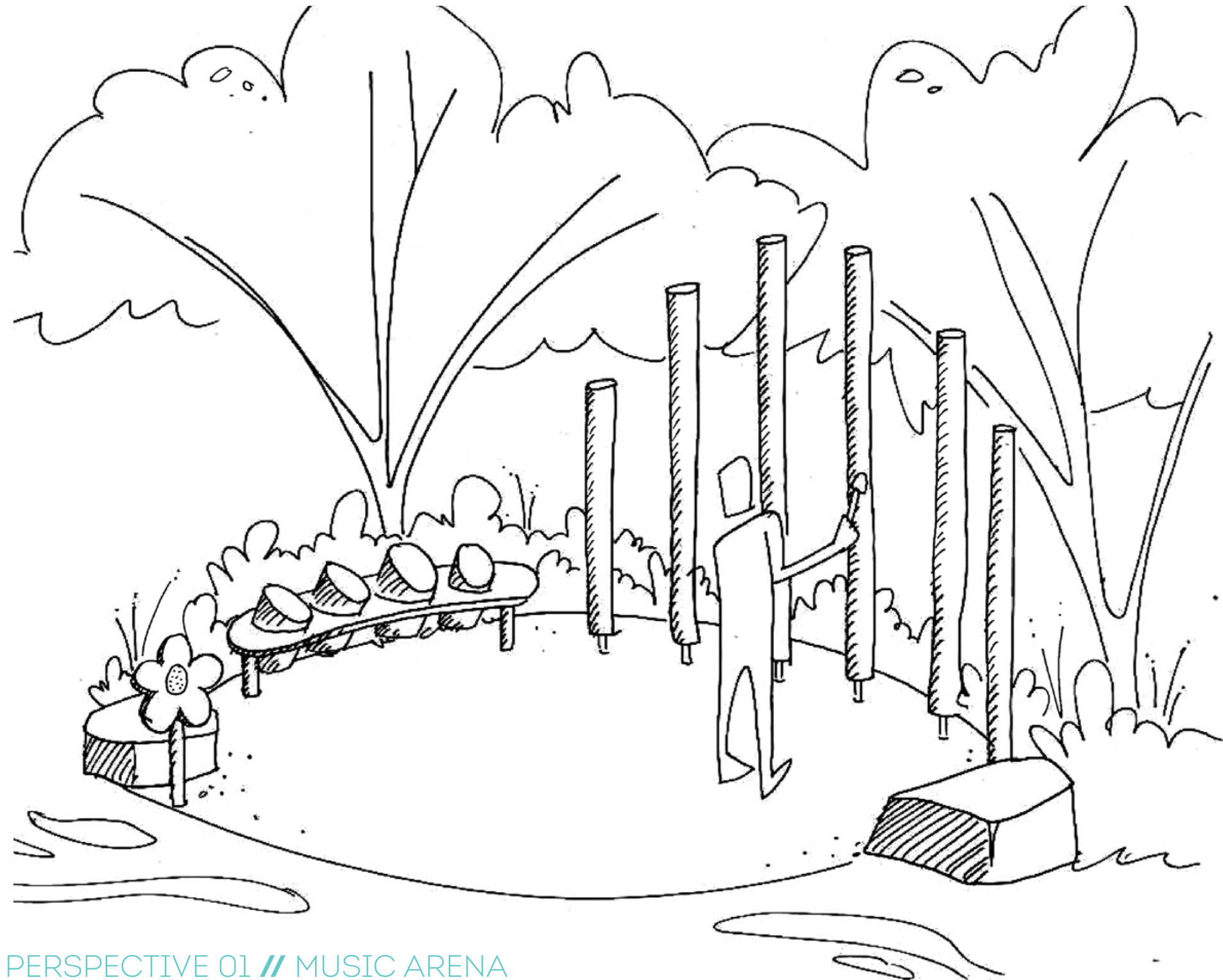




4 DRUMS



CONCRETE



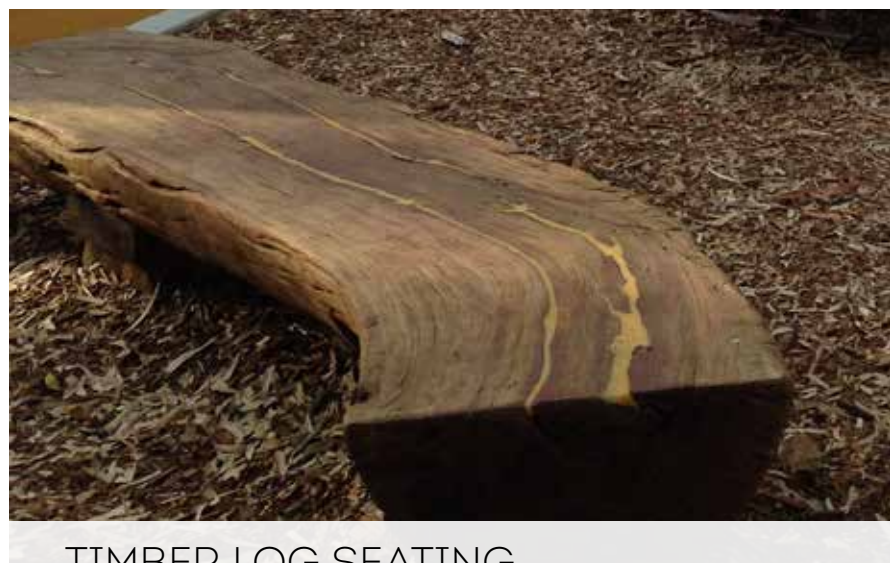
PERSPECTIVE 01 // MUSIC ARENA



NATIVE PLANTING



VARIED ROCK AND LOG EDGING



TIMBER LOG SEATING



GIANT CHIMES



TALK TUBES



CORTEN ANIMAL CUTOUTS



FEATURE ROCK



KANMANTOO BLUESTONE STEPS



DRY CREEK



RETREAT SPACES



VARIED ROCK EDGING



VARIED ROCK SIZES



WATER PLAY - PUSH BUTTON



PAINTED LLINEWORK



PAVING



ASPHALT



PLAY PANEL



COLOURFUL BUTTERFLY ATTRACTING SOFTSCAPE



PLAY SAND



CARVED ROCK



LAYDOWN LOG



ROLLED REO TEPEE



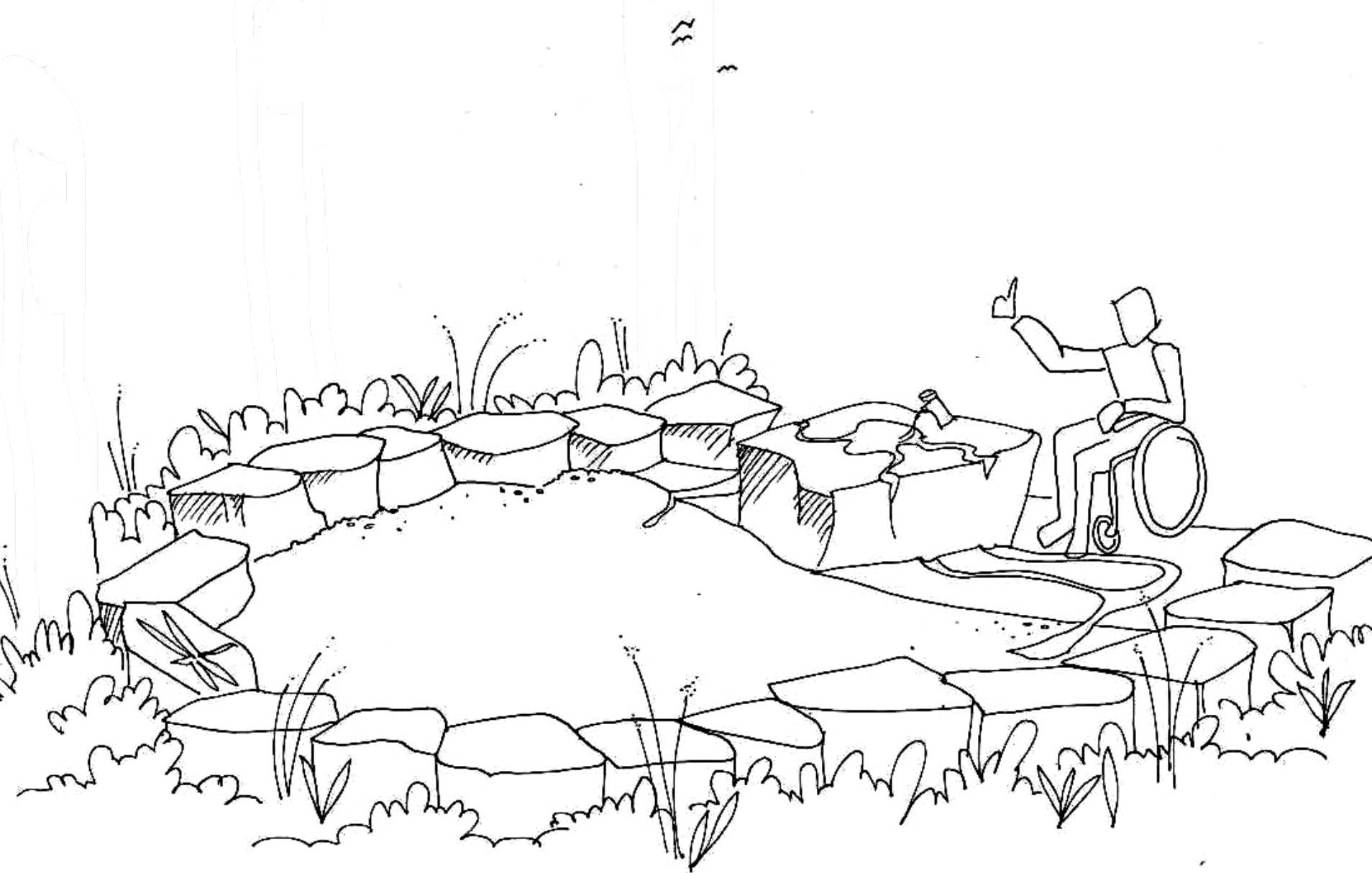
SURFACE WATER CHANNELS



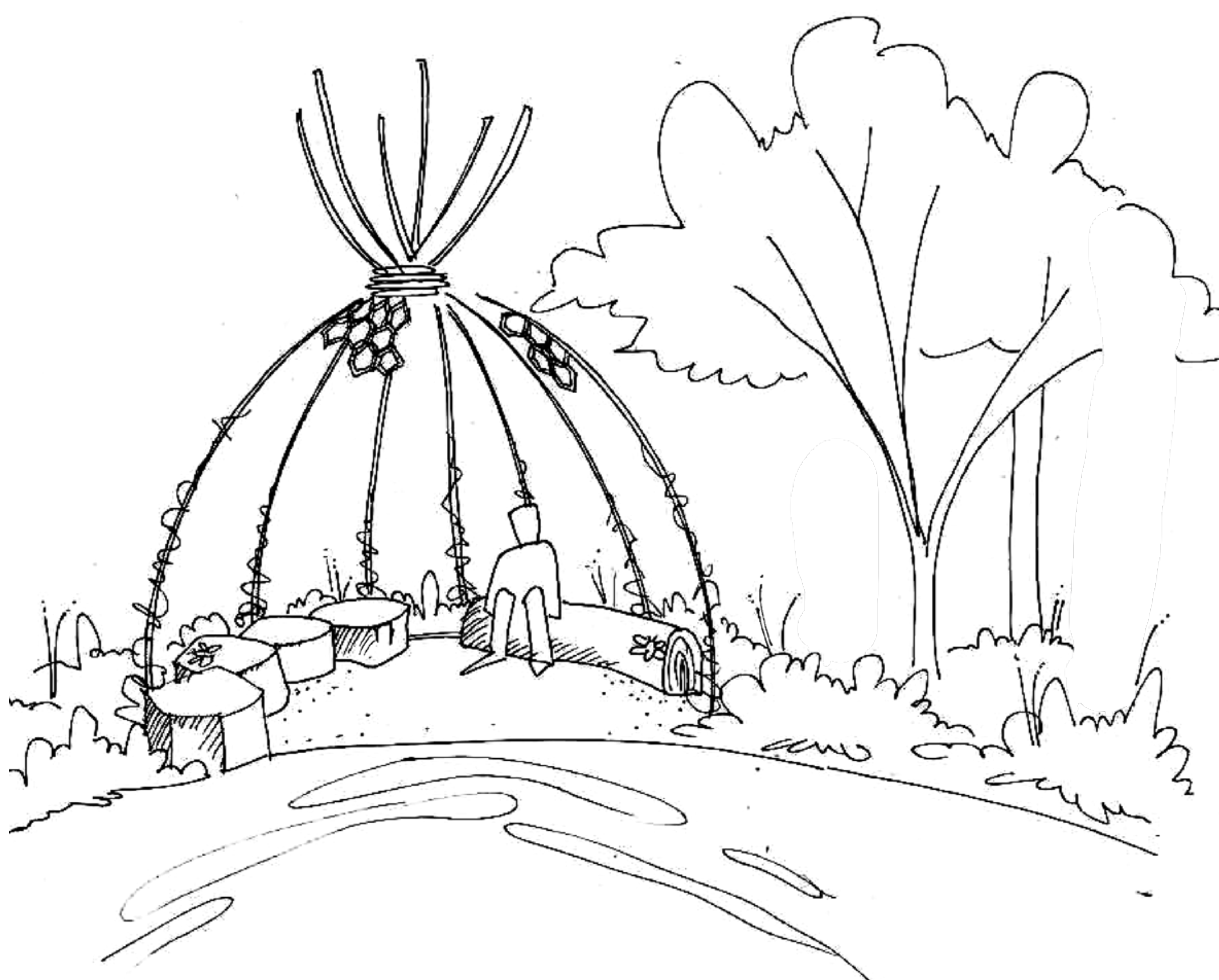
COMPACTED RUBBLE



RAISED ROCKWORK SEATING



PERSPECTIVE 02 // SANDPIT



PERSPECTIVE 03 // BEE CUBBY



LCS LANDSCAPES



CONCEPT 1 // THE RIVERS 3

- WORKS INCLUDE:
- Deriving from three Rivers that run through Gawler, the playground space which is situated on the ridge of the South Para River reflects upon the importance of water to the area, both past and present. As such the walkway runs from entrance to entrance with four play zones that sit along the banks of the walkway like mini billabongs. Each billabong breakout targets several types of play categorise to help encourage a variety of play types.
  - The new asphalt DDA pathway links the existing opening through 4 destinations playspaces. The path is slightly raised to accommodate the mature tree protection zones of the Morton Bay Fig Trees, whilst still having flush transitions between new and existing thresholds. The path consists of both painted asphalt and red permeable paving.
  - Destination 1 // the dry creek includes and new lose pebble wet play area with varied rock edging, 1No. feature carved large bolder with push button anti-vandal tap sitting on a concrete bed with three water channels, for including water play, creating an opportunity for groups or individual play for a variety of ages and abilities.
  - Destination 2 // the music arena houses one half of the talk tube, a '4 note drum set' and the six giant chimes, grouped parallel to the existing playspace so not to impose on the quieter retreat spaces. The variety of instruments enable physical inclusion, creation sensory stimulation, encourages self-expression whilst fostering social interactions.
  - Destination 3 // within a bed of pollen producing plants sits the bee cubby house, with a rolled reo tepee edged by a variety of natural rock and log seating options. Pinned in and around the area is an array of corten bee and honeycomb cut outs along.
  - Destination 4 // the butterfly retreat is a sheltered environment at the end of 3 embedded rock stepping-stones. The area offers a natural regulation space surrounded by both nesting and digesting butterfly attracting plants to encourage sensory regulation and quiet and/or reflective play.
  - Along the walkway sits a lily pad of paving, which acts as a threshold point into the inclusive playground as well as allowing for connection beyond the site area to existing facilities. Within this space sits and 'weather activity panel', as a nod to both the story of our ever-changing environment and the importance of water, as well as a clue to the interactive easily accessible play opportunities within this inclusive space.
  - The entire space is surrounded by dense lowline planting offering a passive edge to the place's, whilst accommodating strong sightline through the space. Due to the large tree offering significant tree canopy and the recent shade shelter to the north, the site is significantly sheltered from solar radiation and only requires a small intervention to alleviate the remaining exposed areas. Thus, the inclusion of a few new small - medium tree canopies, which are to be placed outside of the TPZ or with the first 10%. Planting selections and placements will need to be coordinated on site with the council arborist.
  - A series of seating types is littered throughout the area from custom planed lay-down log seating with inlaid steel animal cut-outs and large rock seating throughout. This allows for a variety of flexible play and education rest stops.

GENERAL NOTES

- 1.1 VERIFY ALL DIMENSIONS, LEVELS AND CROSS-FALLS ON SITE PRIOR TO THE COMMENCEMENT OF ANY WORK. ALLOW FOR A REGISTERED PROFESSIONAL SERVICE LOCATION.
- 1.2 VERIFY ALL SERVICE LOCATIONS PRIOR TO UNDERTAKING OF EXCAVATION WORK.
- 1.3 ANY DISCREPANCIES SHALL BE REPORTED IMMEDIATELY TO THE SUPERINTENDENT FOR CLARIFICATION.
- 1.4 MINIMUM CLEARANCE IS TO BE MAINTAINED BETWEEN SERVICES.
- 1.5 REFER TO MANUFACTURES SPECIFICATIONS AND DETAILS FOR ADDITIONAL INFORMATION, INCLUDING FOOTINGS, STRUCTURE, SITE WORKS AND STORMWATER DETAILS.
- 1.6 THIS DRAWING IS TO BE READ IN CONJUNCTION WITH ALL OTHER DRAWINGS, DOCUMENTS, SCHEDULES AND SPECIFICATIONS.
- 1.7 ALL SANITARY, PLUMBING, DRAINAGE & ELECTRICAL WORK IS TO BE CARRIED OUT BY FULLY QUALIFIED AND LICENSED TRADES-PERSONS.
- 1.8 WHERE POSSIBLE USE STOCKPILED MATERIALS. INCLUDING BUT NOT LIMITED TO TIMBER LOGS, ROCKS, FENCING AND PAVING.
- 1.9 CONTRACTOR TO MAKE GOOD EXISTING FOOTPATH AND SURFACES WHERE DISTURBED.
- 1.10 ALL ELECTRICAL, CIVIL, STRUCTURAL AND HYDRAULIC ENGINEERING COMPONENTS ARE TO BE CONSIDERED AND APPROVED ACCORDING TO ENGINEERS SPECIFICATIONS.

CONNECT WITH EXISTING PUBLIC FACILITIES.

RETAIN COUNCIL ACCESS POINT.

RETAIN EXISTING PLAYGROUND GATE OPENING.

CONNECT INTO EXISTING PATH NETWORK.

REFER TO PLAY ZONES

REFER TO PERSPECTIVES (SHEET 05)

LANDSCAPE CONCEPT 1 PLAN

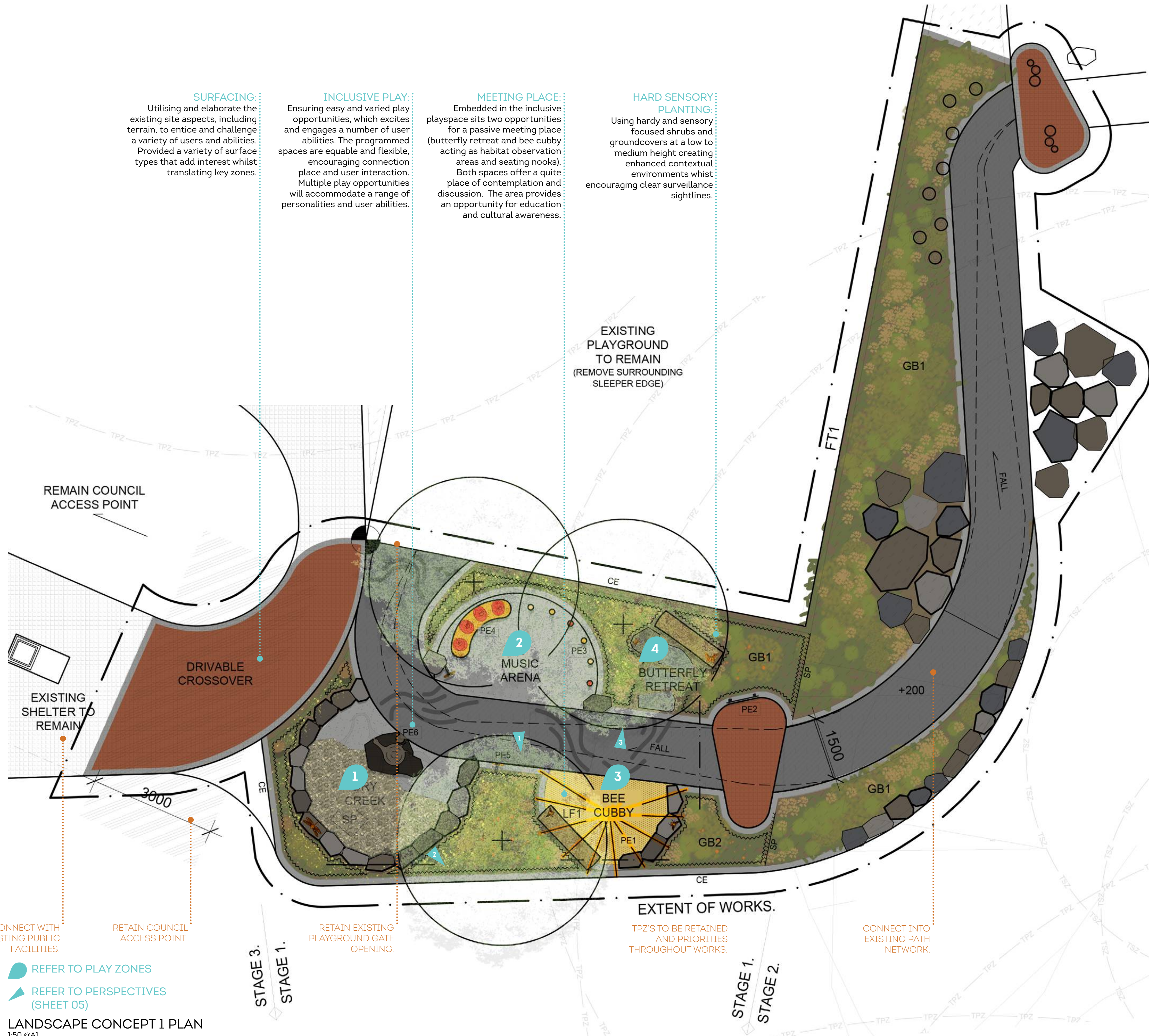
1:50 @A1

**SURFACING:**  
Utilising and elaborate the existing site aspects, including terrain, to entice and challenge a variety of users and abilities. Provided a variety of surface types that add interest whilst translating key zones.

**INCLUSIVE PLAY:**  
Ensuring easy and varied play opportunities, which excites and engages a number of user abilities. The programmed spaces are equitable and flexible, encouraging connection place and user interaction. Multiple play opportunities will accommodate a range of personalities and user abilities.

**MEETING PLACE:**  
Embedded in the inclusive playspace sits two opportunities for a passive meeting place (butterfly retreat and bee cubby acting as habitat observation areas and seating nooks). Both spaces offer a quite place of contemplation and discussion. The area provides an opportunity for education and cultural awareness.

**HARD SENSORY PLANTING:**  
Using hardy and sensory focused shrubs and groundcovers at a low to medium height creating enhanced contextual environments whilst encouraging clear surveillance sightlines.



ACHIEVED BENIFITS OF PLAY:



LEGEND

- PROJECT SET OUT
- SETOUT DIMENSION (mm)
- EXTENT OF PROJECTS WORKS
- APPROX LOCATIONS OF IRRIGATION SLEEVES
- INDICATIVE 1:20 RAMP FALL
- FT1 FENCE TYPE 1 TYPE: EXISTING FENCE TO REMAIN
- FALL DIRECTION OF FALL (MIN 1%)
- 379.62 PROPOSED SURFACE LEVELS TBO
- EXISTING SANDPIT AND SHADE TO BE RETAINED AND PROTECTED.
- TAP PUSH TAP/WATER POINT
- RETAIN DRIVABLE CROSSOVER
- SOAKAGE PIT
- CE CONCRETE EDGE 150 X 150mm SMOOTH FINISH PROFILE
- SP SPADE EDGE TO ALL EDGES BETWEEN TURF AND GARDENBED
- EXISTING TREES TO BE RETAINED
- TPZ TREE PROTECTION ZONE (TPZ). INDICATIVE TREE PROTECTION ZONES OF EXISTING TREES.
- PROPOSED NEW TREE.
- PROPOSED PLANTED BED HARDY BIRD/BEE/BUTTERFLY ATTRACTING PLANTS
- GARDEN BED (GB1/2) TYPE: JEFFERIES 'GARDENERS CHOICE' DEPTH 75MM.
- PAVING TYPE 1 (PV1) BORAL CLASSICPAVE 220X220X40 COLOUR: PAPERBARK
- PAVING TYPE 2 (PV2) INSITU CONCRETE COLOUR GREY
- PAVING TYPE 3 (PV3) ASPHALT/BITUMEN WITH BESPOKE LINE-MARKING
- PAVING TYPE 4 (PV4) COMPACTED FITZGERALD FINES
- SOFTFALL TYPE 1 (SF1) LARGE 'SALT & PEPPER' RIVER PEBBLES SUPPLIER: GARDEN GROVE
- PE1 PLAYGROUND EQUIPMENT TYPE 1 ROLLED REO ARBOUR DOME
- PE2 PLAYGROUND EQUIPMENT TYPE 2 WEATHER STATION PANEL (LT-013) SUPPLIER: WILLPLAY
- PE3 PLAYGROUND EQUIPMENT TYPE 3 GIANT CHIMES (SE-0010) SUPPLIER: WILLPLAY
- PE4 PLAYGROUND EQUIPMENT TYPE 4 4 NOTE DRUM SET (SE-0002) SUPPLIER: WILLPLAY
- PE5 PLAYGROUND EQUIPMENT TYPE 5 SPEAKING FLOWERS (SE-0005) SUPPLIER: WILLPLAY
- PE6 PLAYGROUND EQUIPMENT TYPE 6 LARGE KAPUNDA BLUESTONE WATER BASIN
- LF1 LANDSCAPE FEATURE TYPE 1 CORTEN ANIMAL CUTOUTS





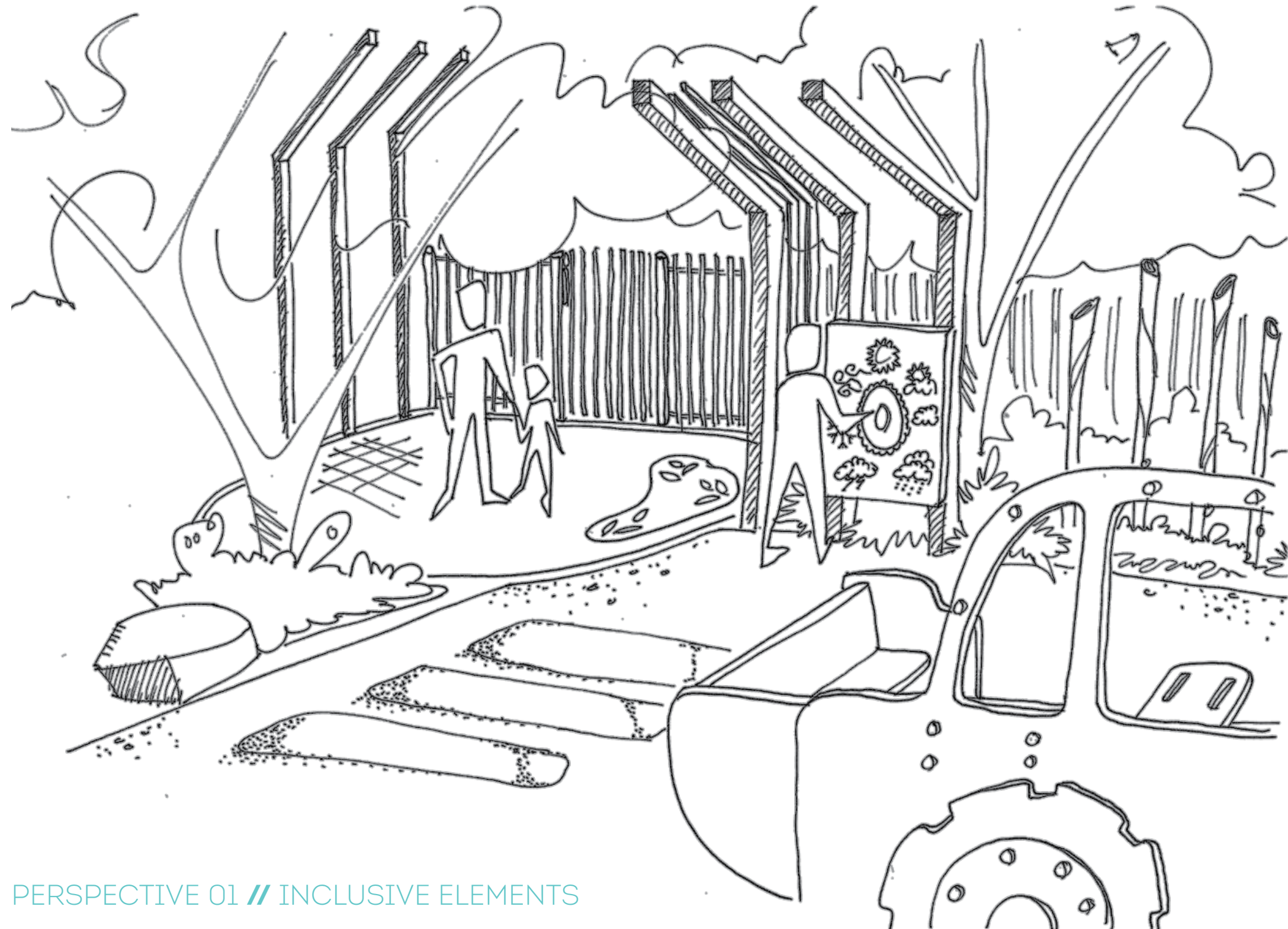
PINNED TIMBER SLEEPERS



TALK TUBES



SENSORY SOFTSCAPE



PERSPECTIVE 01 // INCLUSIVE ELEMENTS



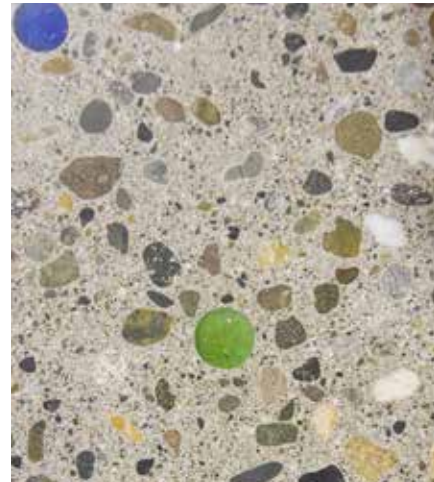
CORTEN ANIMAL CUTOUTS



TIMBER LOG SEATING



COBBLE PAVING



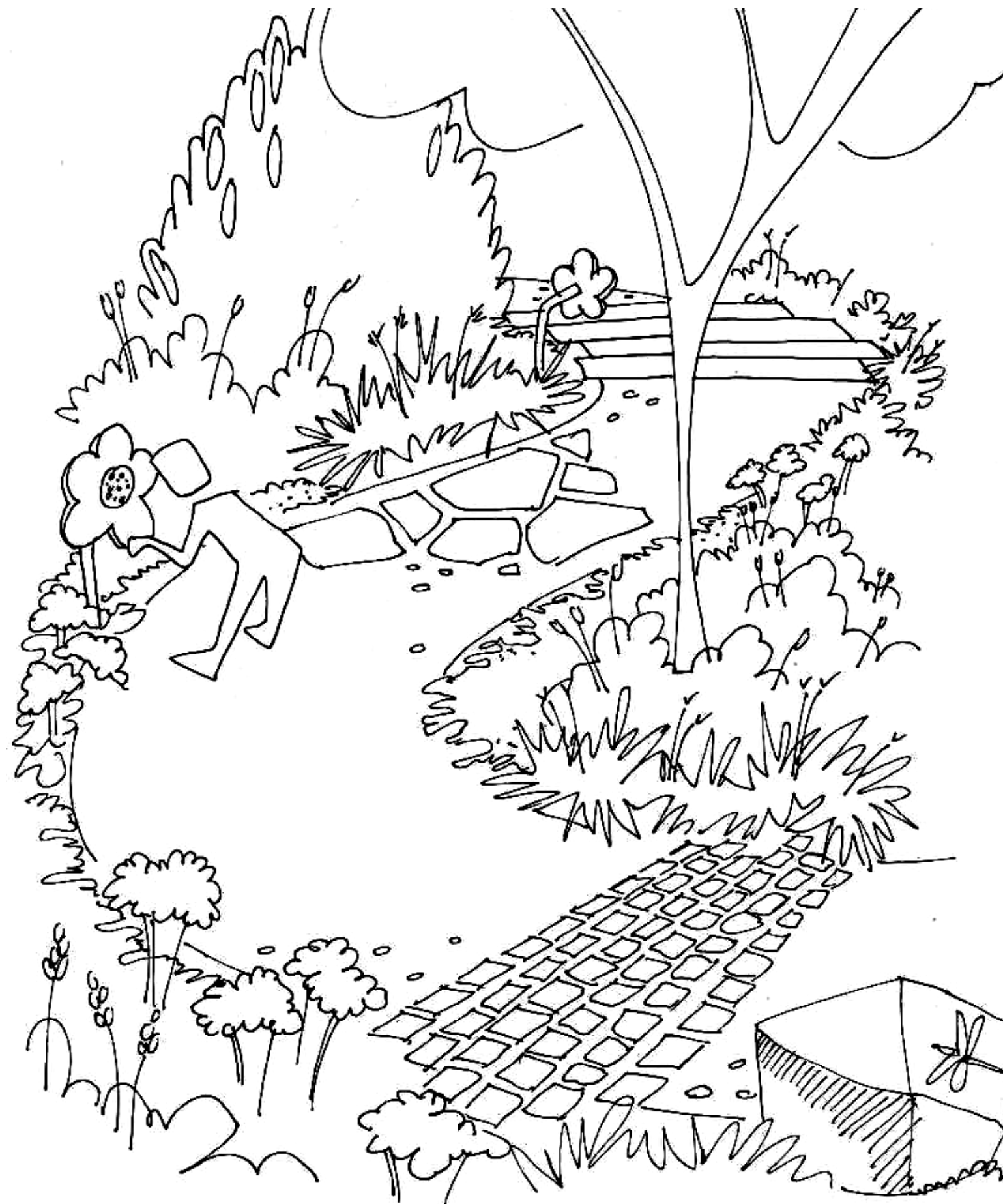
COLOURED GLASS



KANMANTOO CRAZY PAVING



CONCRETE



PERSPECTIVE 02 // SENSORY WALK



BUILDING ARBOR



PLAY PANEL



ROCK EDGING



CORTEN SEED BAG INLAYS



PERMEABLE PAVING (OATMEAL)



PLAY PANEL



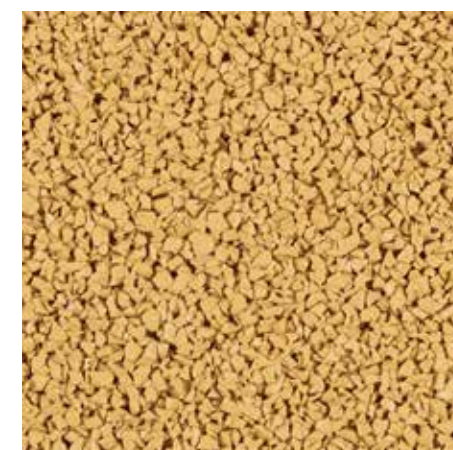
HARDWOOD TIMBER STILTS (excluded)



WHEELCHAIR ACCESSIBLE CAR



MINI RUBBER MOUNDS



EPDM RUBBER



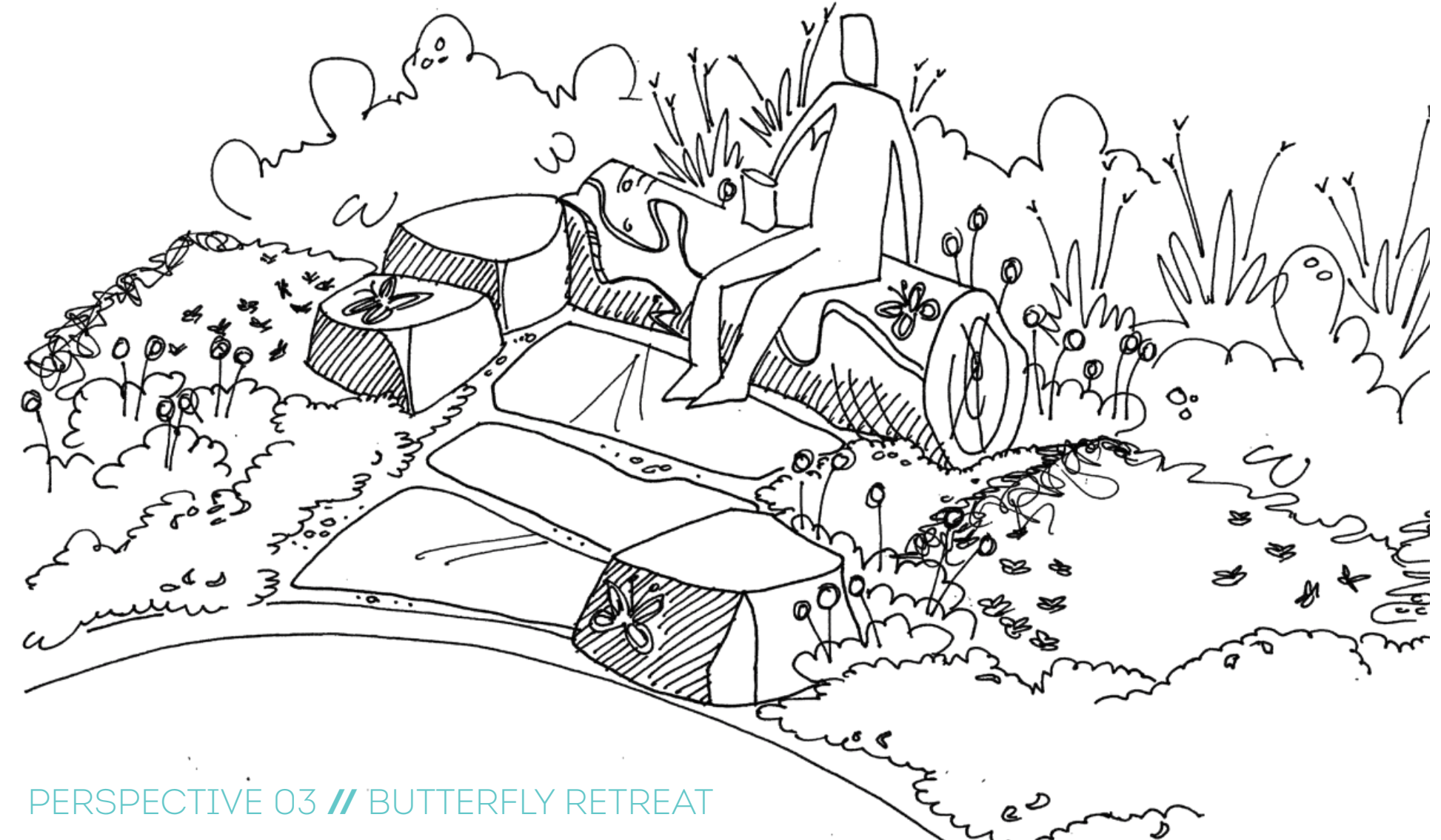
COLOURFUL BUTTERFLY SOFTSCAPE



FEATURE ROCK



KANMANTOO BLUESTONE STEPS



PERSPECTIVE 03 // BUTTERFLY RETREAT



LCS LANDSCAPES



CONCEPT 2 // OUR Paddock

- WORKS INCLUDE:
- Deriving from Gawler's original European regional settlement, the playground space recognises the founding settlers who work with the Kaurna people to understand the land for productive means. Traditionally using the river junction as a meeting place to trade commodities the playground reflects the varied commodity types from cereals, pulses and oilseeds.
  - Destination 1 // As such a central paddock of rubber houses a multiuser wheelchair accessible tractor pulling through mini rubber mounds of wheat crops. Either side of the wide circulation space sits two powder-coated open Arbor building outlines (in council colours) which host a play panel on each, including a weather station and a braille alphabet panel. Along the northern paddock edge is a future opportunity to sit 4No. upright stilt-walk to encourage upper body strength and balance. Either side of the central playspace sits two supporting playspaces: the sensory walk and the butterfly retreat.
  - Destination 2 // the sensory walk sits a 1m wide concrete path with three textural surface changes (1. Pinned Sleepers, 2. Crazy Paving & 3. Cobble Paving. This space houses a variety of textured plants of assorted sizes and height offering an enhanced sensory experience. The space also hosts two talking tubes to encourage moments of integration and passive play opportunities.
  - Destination 3 // Similarly the Butterfly Retreat is a sheltered environment at the end of 3No. embedded rock stepping-stones. The area offers a natural regulation space surrounded by both nesting and digesting butterfly attracting plants. Two mini softscape mounds help enhance the seclusion and encourage sensory regulation and quiet and/or reflective play. Pinned in and around this area, as well as the sensory walk, is an array of corten butterfly cut outs as clues to the supporting nectar and host supplying plants.
  - The east side is slightly raised to accommodate the existing TPZ of the Morton Bay Fig Trees with majority of the structural works taking place outside of this area and encouraging lay down and loose park elements within the area. Do note, all works will require the overview of the council Arborist.
  - The area also allows for the connection into the surrounding walkways and connects into existing public facilities. A new asphalt DDA pathway links into the existing sanitary facilities walkway to the east of the site boundary and an additional permeable paved landing pad extends to marry up with the existing paving shelter pad. Ensuring a flush transition between both services.
  - The entire space is surrounded by dense lowline planting offering a passive edge to the place's, whilst accommodating strong sightline through the space. Due to the large tree offering significant tree canopy and the recent shade shelter to the north, the site is significantly sheltered from solar radiation and only requires a small intervention to alleviate the remaining exposed areas. Thus, the inclusion of 4No. new small - medium tree canopies, which are to be placed outside of the TPZ or with the first 10%. Planting selections and placements will need to be coordinated on site with the council arborist.
  - A series of seating types is littered throughout the area from custom planned lay-down log seating with inlaid steel animal cut-outs and large rock seating throughout. This allows for a variety of flexible play and education rest stops.

- GENERAL NOTES
- 1.1 VERIFY ALL DIMENSIONS, LEVELS AND CROSS-FALLS ON SITE PRIOR TO THE COMMENCEMENT OF ANY WORK. ALLOW FOR A REGISTERED PROFESSIONAL SERVICE LOCATION.
  - 1.2 VERIFY ALL SERVICE LOCATIONS PRIOR TO UNDERTAKING OF EXCAVATION WORK.
  - 1.3 ANY DISCREPANCIES SHALL BE REPORTED IMMEDIATELY TO THE SUPERINTENDENT FOR CLARIFICATION.
  - 1.4 MINIMUM CLEARANCE IS TO BE MAINTAINED BETWEEN SERVICES.
  - 1.5 REFER TO MANUFACTURES SPECIFICATIONS AND DETAILS FOR ADDITIONAL INFORMATION, INCLUDING FOOTINGS, STRUCTURE, SITE WORKS AND STORMWATER DETAILS.
  - 1.6 THIS DRAWING IS TO BE READ IN CONJUNCTION WITH ALL OTHER DRAWINGS, DOCUMENTS, SCHEDULES AND SPECIFICATIONS.
  - 1.7 ALL SANITARY, PLUMBING, DRAINAGE & ELECTRICAL WORK IS TO BE CARRIED OUT BY FULLY QUALIFIED AND LICENSED TRADES-PERSONS.
  - 1.8 WHERE POSSIBLE USE STOCKPILED MATERIALS. INCLUDING BUT NOT LIMITED TO TIMBER LOGS, ROCKS, FENCING AND PAVING.
  - 1.9 CONTRACTOR TO MAKE GOOD EXISTING FOOTPATH AND SURFACES WHERE DISTURBED.
  - 1.10 ALL ELECTRICAL, CIVIL, STRUCTURAL AND HYDRAULIC ENGINEERING COMPONENTS ARE TO BE CONSIDERED AND APPROVED ACCORDING TO ENGINEERS SPECIFICATIONS.

- REFER TO PLAY ZONES
- REFER TO PERSPECTIVES (SHEET 07)

LANDSCAPE CONCEPT 2 PLAN  
1:50 @A1

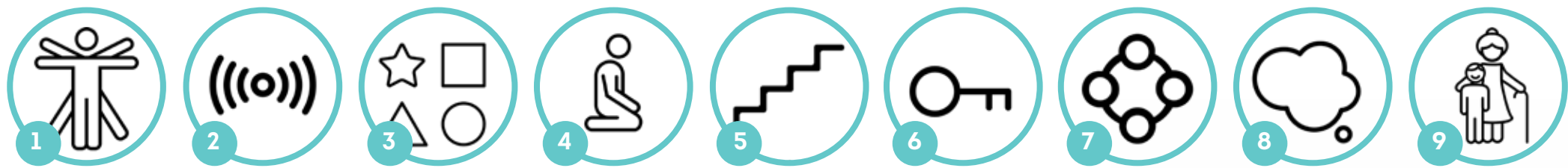
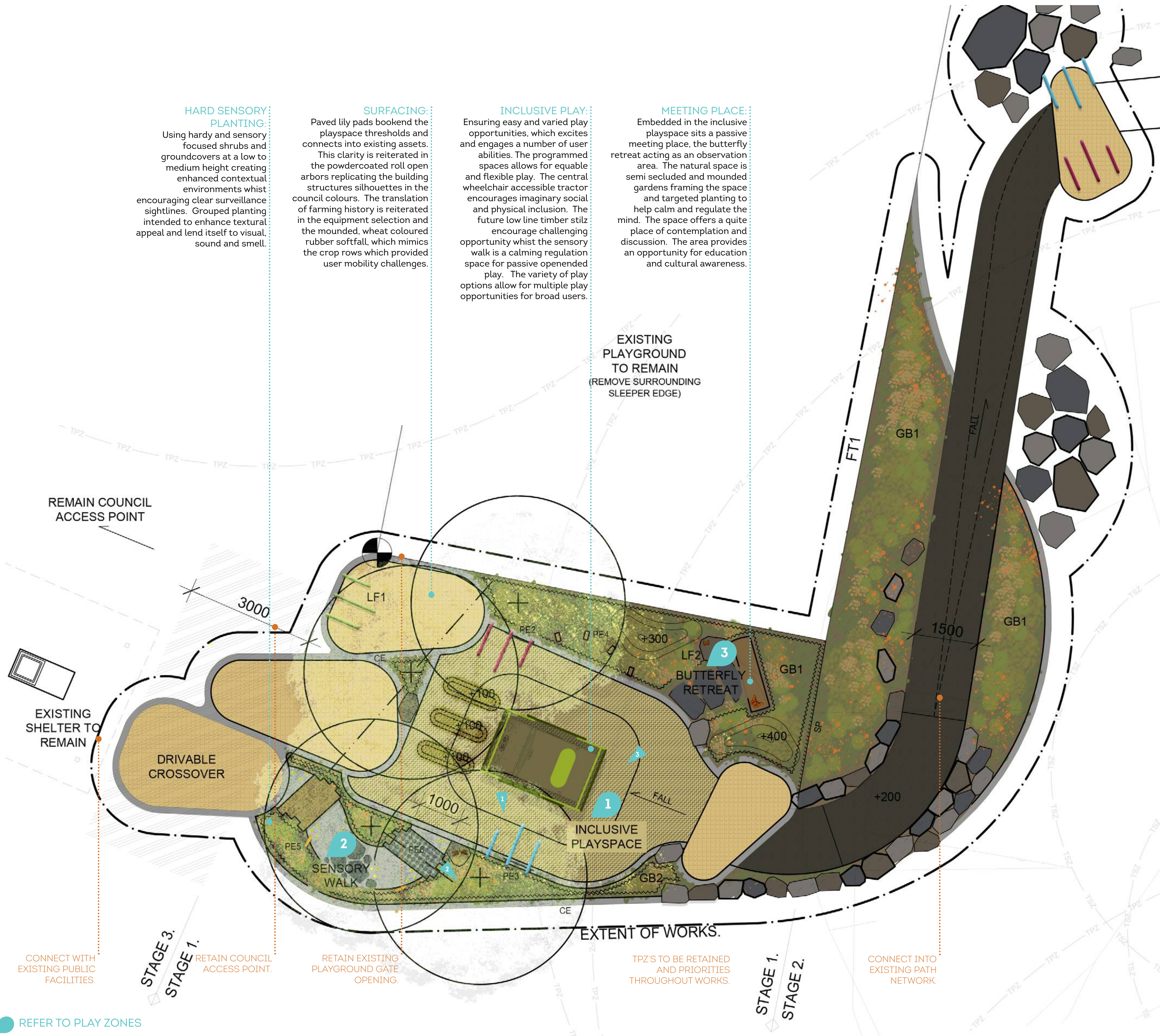
**HARD SENSORY PLANTING:**  
Using hardy and sensory focused shrubs and groundcovers at a low to medium height creating enhanced contextual environments whilst encouraging clear surveillance sightlines. Grouped planting intended to enhance textural appeal and lend itself to visual, sound and smell.

**SURFACING:**  
Paved lily pads bookend the playspace thresholds and connects into existing assets. This clarity is reiterated in the powdercoated roll open arbors replicating the building structures silhouettes in the council colours. The translation of farming history is reiterated in the equipment selection and the mounded, wheat coloured rubber softfall, which mimics the crop rows which provided user mobility challenges.

**INCLUSIVE PLAY:**  
Ensuring easy and varied play opportunities, which excites and engages a number of user abilities. The programmed spaces allows for equitable and flexible play. The central wheelchair accessible tractor encourages imaginary social and physical inclusion. The future low line timber stilt encourage challenging opportunity whilst the sensory walk is a calming regulation space for passive opened play. The variety of play options allow for multiple play opportunities for broad users.

**MEETING PLACE:**  
Embedded in the inclusive playspace sits a passive meeting place, the butterfly retreat acting as an observation area. The natural space is semi secluded and mounded gardens framing the space and targeted planting to help calm and regulate the mind. The space offers a quite place of contemplation and discussion. The area provides an opportunity for education and cultural awareness.

EXISTING PLAYGROUND TO REMAIN (REMOVE SURROUNDING SLEEPER EDGE)



- LEGEND
- PROJECT SET OUT
  - SETOUT DIMENSION (mm)
  - EXTENT OF PROJECTS WORKS
  - APPROX LOCATIONS OF IRRIGATION SLEEVES
  - INDICATIVE 1:20 RAMP FALL
  - FENCE TYPE 1 TYPE: EXISTING FENCE TO REMAIN
  - FALL DIRECTION OF FALL (MIN 1%)
  - PROPOSED SURFACE LEVELS TSD
  - EXISTING SANDPIT AND SHADE TO BE RETAINED AND PROTECTED.
  - RETAIN DRIVABLE CROSSOVER
  - CE CONCRETE EDGE 150 X 150mm SMOOTH FINISH PROFILE
  - SP SPADE EDGE TO ALL EDGES BETWEEN TURF AND GARDENBED
  - EXISTING TREES TO BE RETAINED
  - TPZ TREE PROTECTION ZONE (TPZ). INDICATIVE TREE PROTECTION ZONES OF EXISTING TREES.
  - PROPOSED NEW TREE.
  - PROPOSED PLANTED BED HARDY BIRD/BEE/BUTTERFLY ATTRACTING PLANTS
  - GARDEN BED (GB1/2) TYPE: JEFFERIES 'GARDENERS CHOICE' DEPTH 75MM.
  - PAVING TYPE 1 (PV1) BORAL CLASSICPAVE 220X220X40 COLOUR: PAFOTMEAL
  - PAVING TYPE 2 (PV2) INSTU CONCRETE COLOUR GREY
  - SOFTFALL TYPE 1 (SF1) CERTIFIED EPDM RUBBER SOFT FALL MIN DEPTH 350MM WITH MIN 100MM H MOUNDING COLOUR: WHEAT
  - PE1 PLAYGROUND EQUIPMENT TYPE 1 WHEELCHAIR ACCESSIBLE CAR SUPPLIER: WILLPLAY
  - PE2 PLAYGROUND EQUIPMENT TYPE 2 WEATHER STATION PANEL (LT-013) SUPPLIER: WILLPLAY
  - PE3 PLAYGROUND EQUIPMENT TYPE 3 BRAILLE ALPHABET PANEL (LT-011) SUPPLIER: WILLPLAY
  - PE4 PLAYGROUND EQUIPMENT TYPE 4 BESPOKE TIMBER STILT WALK FOOTHOLD MAX 550MM FROM FFL (excluded from scope)
  - PE5 PLAYGROUND EQUIPMENT TYPE 5 SPEAKING FLOWERS (SE-0005) SUPPLIER: WILLPLAY
  - PE6 PLAYGROUND EQUIPMENT TYPE 6 SENSORY PATH PINNED SLEEPERS/CRAZY PACE/ COBBLE BANDING AND SEEDED GLASS BEADS
  - LF1 LANDSCAPE FEATURE TYPE 1 ENTRY ROLLED STEEL POSTS COLOURS: RED GREEN BLUE REFER TO COUNCIL COLOURS
  - LF2 LANDSCAPE FEATURE TYPE 2 CORTEN ANIMAL CUTOUTS

